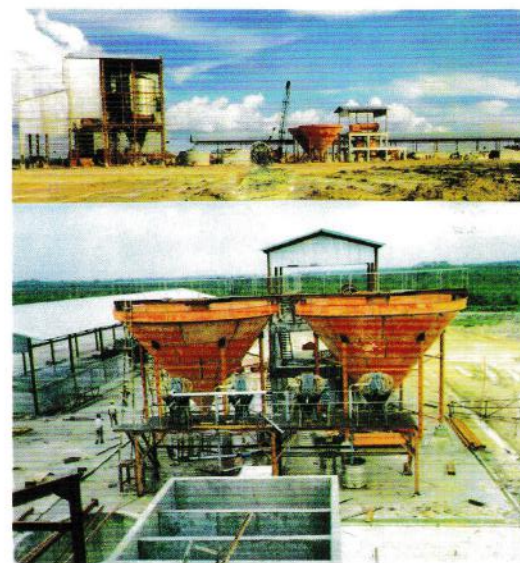
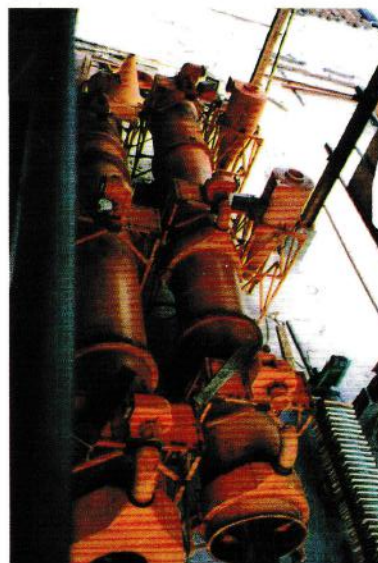


# 噴霧乾燥機 (圓盤型·壓力噴嘴型)

SPRAY DRYER WITH DISC  
OR PRESSURE NOZZLE ATOMIZER



宇達機械工業股份有限公司  
IDTA MACHINERY CO., LTD



## 主要產品

1. 旋轉式乾燥機
2. 氣流式乾燥機
3. 連續流動層乾燥機
4. 噴嘴式噴霧乾燥機
5. 圓盤式噴霧乾燥機
6. 圓盤和噴嘴式噴霧乾燥機
7. 圓盤和噴嘴式實驗用噴霧乾燥機
8. 噴嘴式實驗用噴霧乾燥機
9. 圓盤式實驗用噴霧乾燥機
10. 熱風循環乾燥機
11. 化工整廠輸出  
(高嶺土廠, 磁磚廠等)
12. 自動控制系統
13. 反應回收和蒸餾精製
14. 環保工程
15. 空氣和機械式的輸送系統

## Main Product

1. Rotary Dryer
2. Flash Dryer
3. Fluid Bed Dryer
4. Nozzle Type Spray Dryer
5. Disk Type Spray Dryer
6. Spray Dryer Disk & Nozzle Combined Use
7. Spray Dryer for Laboratories Use Disk & Nozzle  
Combined Type
8. Spray Dryer for Laboratories Use Nozzle Type
9. Spray Dryer for Laboratories Use Disk Type
10. Hot-Air Circulating System
11. Chemical Plant Equipment (Kaolin Plant,  
Tile Plant, etc)
12. Auto Control System
13. Reactor and Screen Tower
14. Environmental Engineering
15. Pneumatic and Mechanical Conveying system



宇達機械工業股份有限公司

IDTA Machinery Co., Ltd.

公司：台北縣五股鄉成泰路三段 46 號七樓之二

工廠：台北縣五股鄉中直路 22 號之一

Address: 7F-2, No. 46, Sec. 3, Cheng-Tai Rd., Wu Ku, Taipei, Taiwan, R.O.C

TEL: 886-2-2293-8947

FAX: 886-2-2294-1023

E-mail: idta-machine@umail.hinet.net

Http://www.idtamachine.com.tw

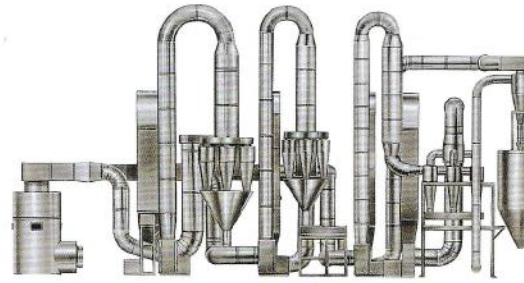


噴霧式噴霧乾燥機

一般可獲得比圓盤式噴霧乾燥機較大粒子的產品。

**Nozzle Type Spray Dryer**

The products to be produced with this device are generally larger granular products than the disk type dryer.



氣流式乾燥機

此裝置原理，在急速的流動熱空氣中，入濕潤原料，將其於熱氣流分散成粒狀遊，而達到瞬間乾燥和粉碎

**Flash Dryer**

This is a device to dry wet materials instantly by feeding them into the hot air to collide with it and forwarding them in the state of floating.



圓盤式噴霧乾燥機

圓盤式噴霧乾燥機有一個霧化圓盤，原液經高旋轉速圓盤霧化，再瞬間以熱氣風接觸乾燥。

**Disk Type Spray Dryer**

Disk type spray dryers have a disk which turns at a high speed to spray the liquid material for instant drying by supplying a hot air stream.



圓盤和噴霧式乾燥機

同時具有圓盤和噴霧的霧化設備，所以可以生產廣泛的粉料顆料尺寸 10 $\mu$  到 250 $\mu$ 。

**Spray Dryer Disk & Nozzle Combined Use**

SDDN spray dryer, the slurry spraying mechanism adopts the both types, disk and nozzle. Accordingly, wide granulated powder material 10 $\mu$  to 250 $\mu$ .

宇達機械工業股份有限公司 (Idta Machinery Co., Ltd.) 創立於民國69年，從事各類乾燥機設計、製造、安裝和試車，尤其Open/Closed Cycle 噴霧乾燥機，成立迄今完成工程，善獲業主及同業口碑。並和有50年歷史日本中部熱株式會社 (Chubu Netsu Industries Co., Ltd.) 有技術合作關係。

IDTA Machine Company started since 1980, expert technology for all spray drying applications. 23 years experience in custom designs, building, installation and testing. Especially in Open/Close Cycle spray dryer equipments. Our spray dryer have received strong attainment from domestic and abroad. IDTA also has technological cooperation with Chubu Netsu Industries Company which has 50 years history in Japan.



圓盤式噴霧實驗機

實驗用，廣泛的小型工業領域，如化工，製藥，製陶，食品，其他...目的於一般實驗，亦可做多種小量生產利用。

**Spray Dryer with Disc for Laboratories Use**

Experimental spray dryers are mainly used as small-scale production in chemical-, food-, medical-, ceramic-industries, and other similar industries.



圓盤和噴霧式實驗機

兼具圓盤和噴霧的霧化設備，所以有廣泛的粉料顆料尺寸選擇10 $\mu$  到 250 $\mu$ 。

**Laboratory Spray Dryer Disk & Nozzle Type**

The Laboratory Spray Dryer is a testing spray dryer used in wide spectrum of industry such as chemistry, ceramics, pharmacy, foods etc.

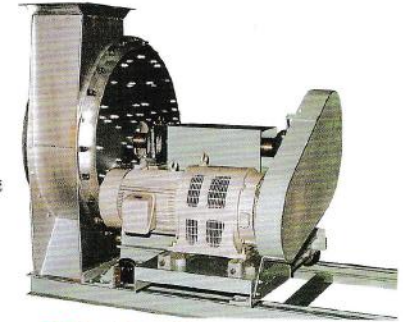


二流體噴霧式實驗機

運用空氣噴霧式將原液霧化，再直接與熱氣流接觸達到瞬間乾燥的設備。

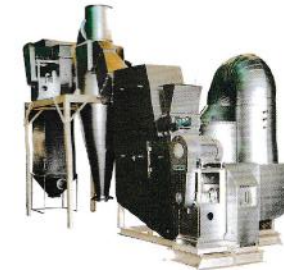
**Laboratory Spray Dryer 2-Fluid Nozzle Atomizing Type (Air Atomizing Type)**

Spray Dryer is intended to take momentary drying, followed by the direct contact of hot air



CM-Type Cage Mill

Cage mill is the mill-dispersing drier playing the most important role in the flush dryer.

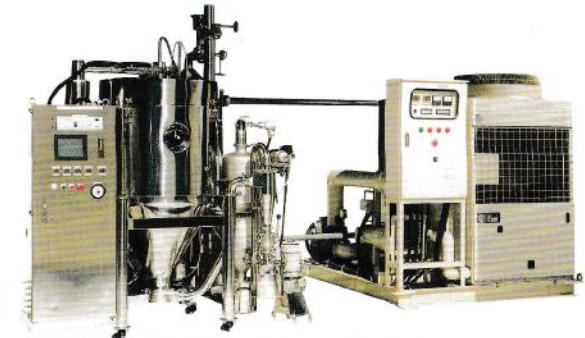


連續流動層乾燥機

熱風經由乾燥室下方多孔板導入，使溼潤原料流體化乾燥之，可作為噴霧乾燥機後產品的第二段乾燥或冷卻。

**Fluid Bed Dryer**

The dryer, comprising of a body having a permeable bottom dries wet material by allowing them to flow with hot blast there from.



閉迴路實驗/少量生產圓盤噴霧乾燥機 Close Cycle Spray Dryer with Disk Type

使用N 循環，產品在乾燥和收集過程不會和空氣接觸  
溶劑蒸發能力 = 4 ~ 20 kg/hr

The closed cycle Spray Dryer is a new design for small-scale production of special powders, scientific test work, industrial research and development.